



# WELDCO-BEALES

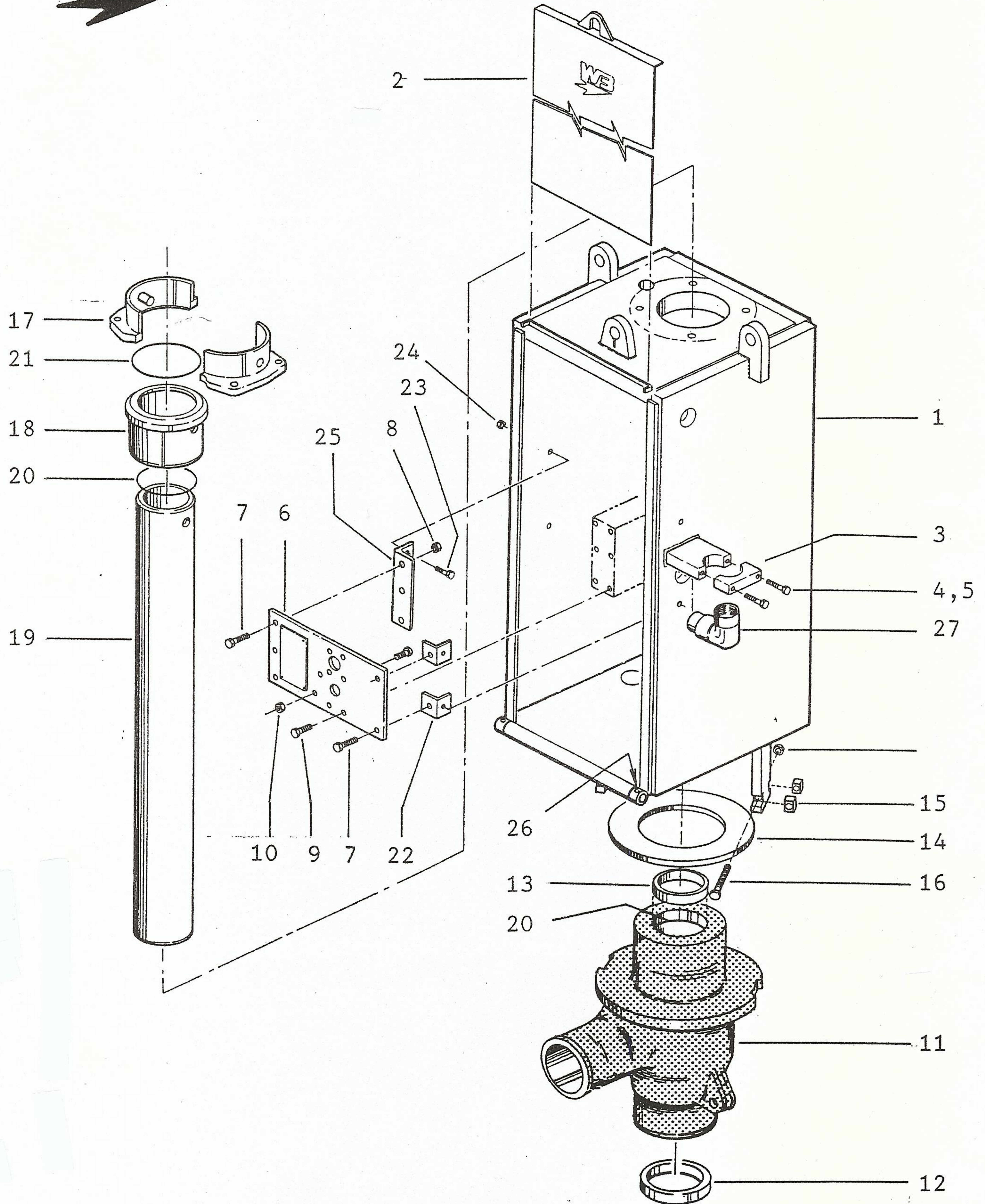


FIGURE 1

REV	DATE	PRODUCT	MODEL	DESCRIPTION	WB PART NO	REF
	10-94	CASING HAMMER	1321MV	CASE & CENTER TUBE 4.5 DRILL		



FIGURE 1

1321MV CASING HAMMER

ITEM NO	WB PART NO	QTY	PART DESCRIPTION	SERIAL NO EFFECTIVITY
<b>CASE AND CENTER TUBE-4.5 DRILL</b>				
1	362-000-005	1	CASE-WELDMENT (99075)	101
2	362-002-003	1	DOOR-WELDMENT (99090)	101
3	760-020-037	1	CLAMP (58698)	101
4	545-061-053	2	HEX HEAD SCREW 1/2 NC X 2-3/4	101
5	545-073-005	2	LOCK WASHER 1/2 Ø	101
6	760-000-009	1	MOUNTING PLATE (55358)	101
7	545-060-053	5	HEX HEAD CAPSCREW 1/2 NF X 1-1/2	101
8	545-023-053	7	LOCK NUT 1/2 NF	101
9	545-061-047	8	HEX HEAD CAPSCREW 1/2 NC X 1-1/4	101
10	545-030-000	2	JAM NUT 1/2 NC	101
11	760-101-004	1	DRIVE DISCHARGE FITTING (91605)	101
12	760-001-001	1	INSERT - HARDENED (46098)	101
13	760-105-007	1	BUSHING - WEAR (96280)	101
14	545-081-000	1	RUBBER CUSHION (45822)	101
15	700-010-014	4	RETAINING LUG (45824)	101
16	545-060-066	2	HEX HEAD CAPSCREW 1/2 NF X 5-1/2	101
17	362-001-003	1	SPLIT COLLAR - ASSEMBLY (99087)	101
18	760-103-004	1	TOP ANVIL (99085)	101
19	760-102-007	1	CENTER TUBE (99086)	101
20	535-036-005	2	O-RING	101
21	535-030-372	1	O-RING	101
22	99110	2	ANGLE	101
23	545-060-054	4	HEX HEAD CAPSCREW 1/2 NF X 1-3/4	101
24	545-030-011	4	JAM NUT 1/2 NF	101
25	99111	1	ANGLE	101
26	563-041-002	2	GREASE FITTING	101
27	552-001-001	1	SWIVEL JOINT 90°	101





# WELDCO-BEALLES

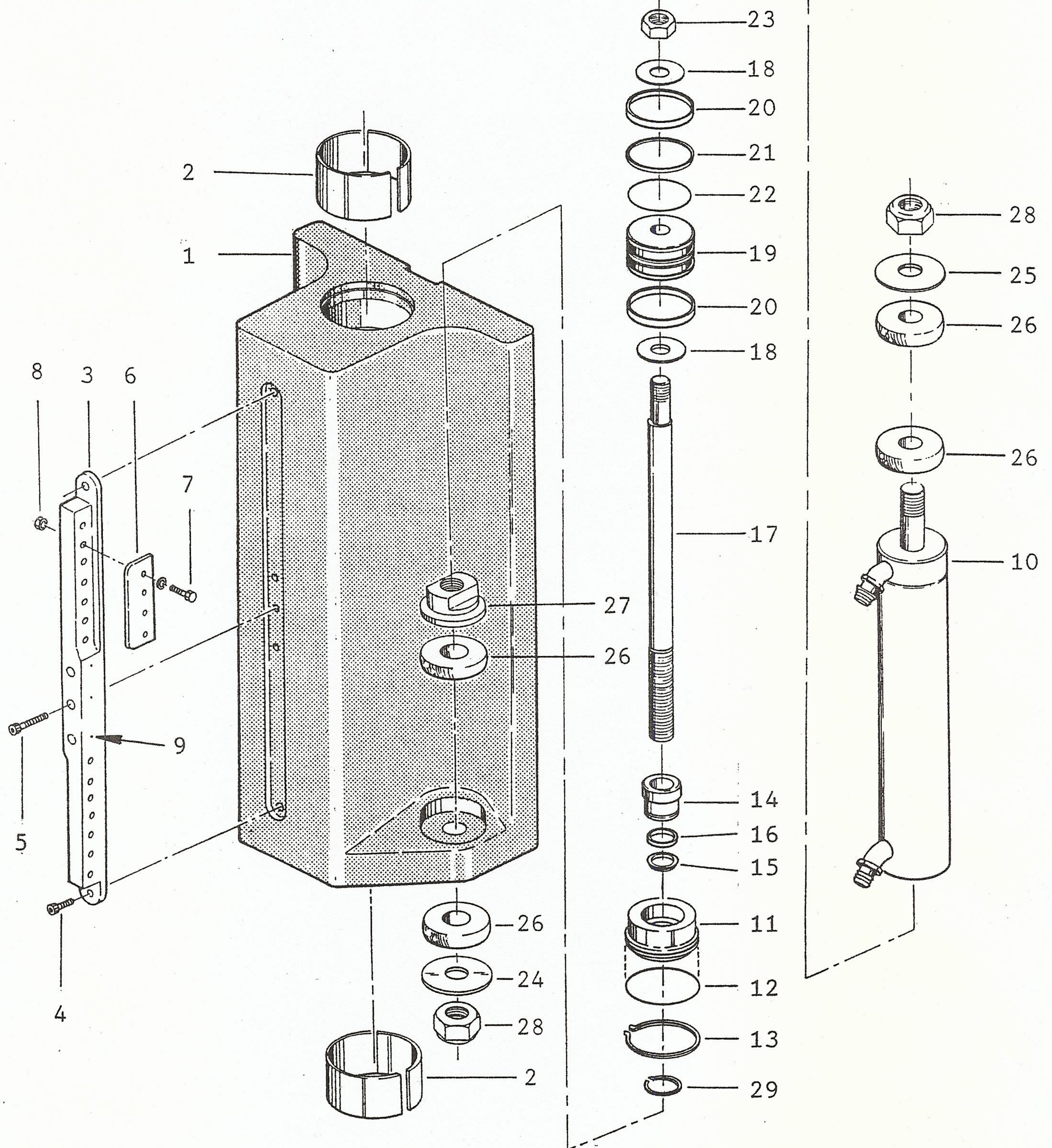


FIGURE 2

REV	DATE	PRODUCT	MODEL	DESCRIPTION	WB PART NO	REF
	10-94	CASING HAMMER	1321MV	RAM & AIR CYLINDER		



## FIGURE 2

### 1321MV CASING HAMMER

PAGE 1

ITEM NO	WB PART NO	QTY	PART DESCRIPTION	SERIAL NO EFFECTIVITY
<b>RAM AND AIR CYLINDER</b>				
1	760-109-005	1	RAM (99070)	101
2	713-010-041	2	BUSHING - BRONZE (46758)	101
3	760-104-006	1	RAMP ADAPTER (99084)	101
4	545-062-089	2	SOCKET HEAD SCREW 1/2 NC X 1-1/2	101
5	545-062-015	3	SOCKET HEAD SCREW 1/2 NC X 2-1/2	101
6	760-104-002	2	RAMP (55260)	101
7	545-061-049	8	HEX HEAD SCREW 1/2 NC X 1-3/4	101
8	545-030-000	8	JAM NUT 1/2 NC	101
9	545-064-002	3	SOCKET HEAD SET SCREW 1/4 NC X 1/4	101
	318-000-005	REF	AIR CYLINDER ASSEMBLY (99096)	101
10	99097	2	BARREL - WELDMENT	101
11	99104	2	GLAND HOUSING	101
12	535-030-248	2	O-RING	101
13	545-038-034	2	SNAP RING	101
14	760-108-001	2	GLAND BEARING (46274)	101
15	535-070-019	2	ROD WIPER	101
16	535-080-026	2	ROD SEAL	101
17	719-304-016	2	PISTON ROD (99106)	101
18	700-001-032	4	WASHER (46295)	101
19	719-501-090	2	PISTON (99105)	101
20	535-060-006	4	WEAR RING	101
21	535-050-057	2	PISTON SEAL	101
22	535-030-157	2	O-RING	101
23	545-019-011	2	HEX NUT 1" NF	101
24	700-001-047	2	WASHER (99107)	101
25	700-001-029	2	WASHER (45854)	101
26	760-106-001	8	URETHANE RING (45856)	101
27	700-005-006	2	ROD NUT (46297)	101

(CONTINUED ON PAGE 2)



## FIGURE 2

### 1321MV CASING HAMMER

PAGE 2

ITEM NO	WB PART NO	QTY	PART DESCRIPTION	SERIAL NO EFFECTIVITY
			RAM AND AIR CYLINDER (continued) .....	
28	545-023-060	4	LOCK NUT	101
29	545-039-020	2	SNAP RING	101





# WELDCO-BEALES

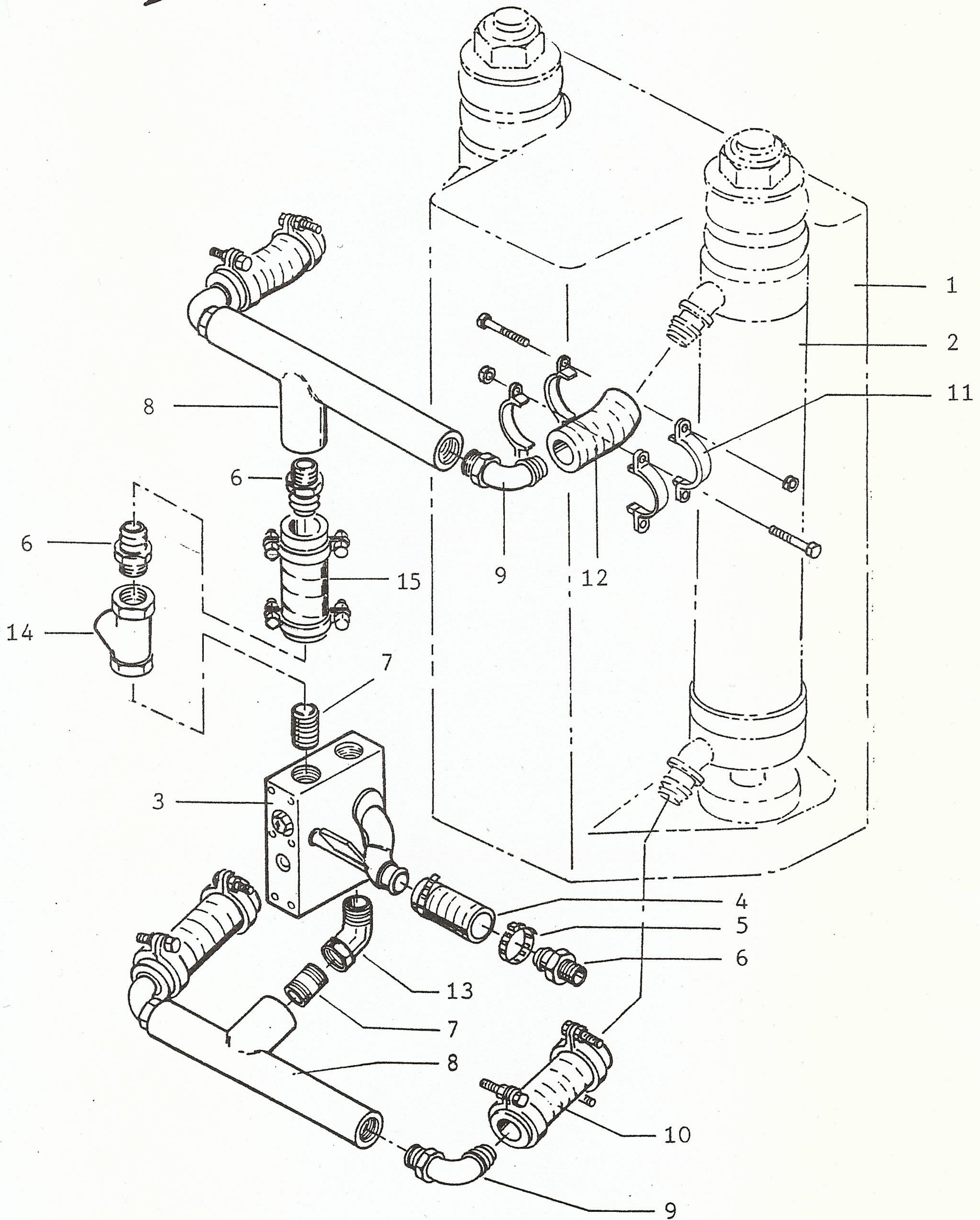


FIGURE 3

REV	DATE	PRODUCT	MODEL	DESCRIPTION	WB PART NO	REF
	10-94	CASING HAMMER	1321MV	INTERNAL AIR SYSTEM		



FIGURE 3

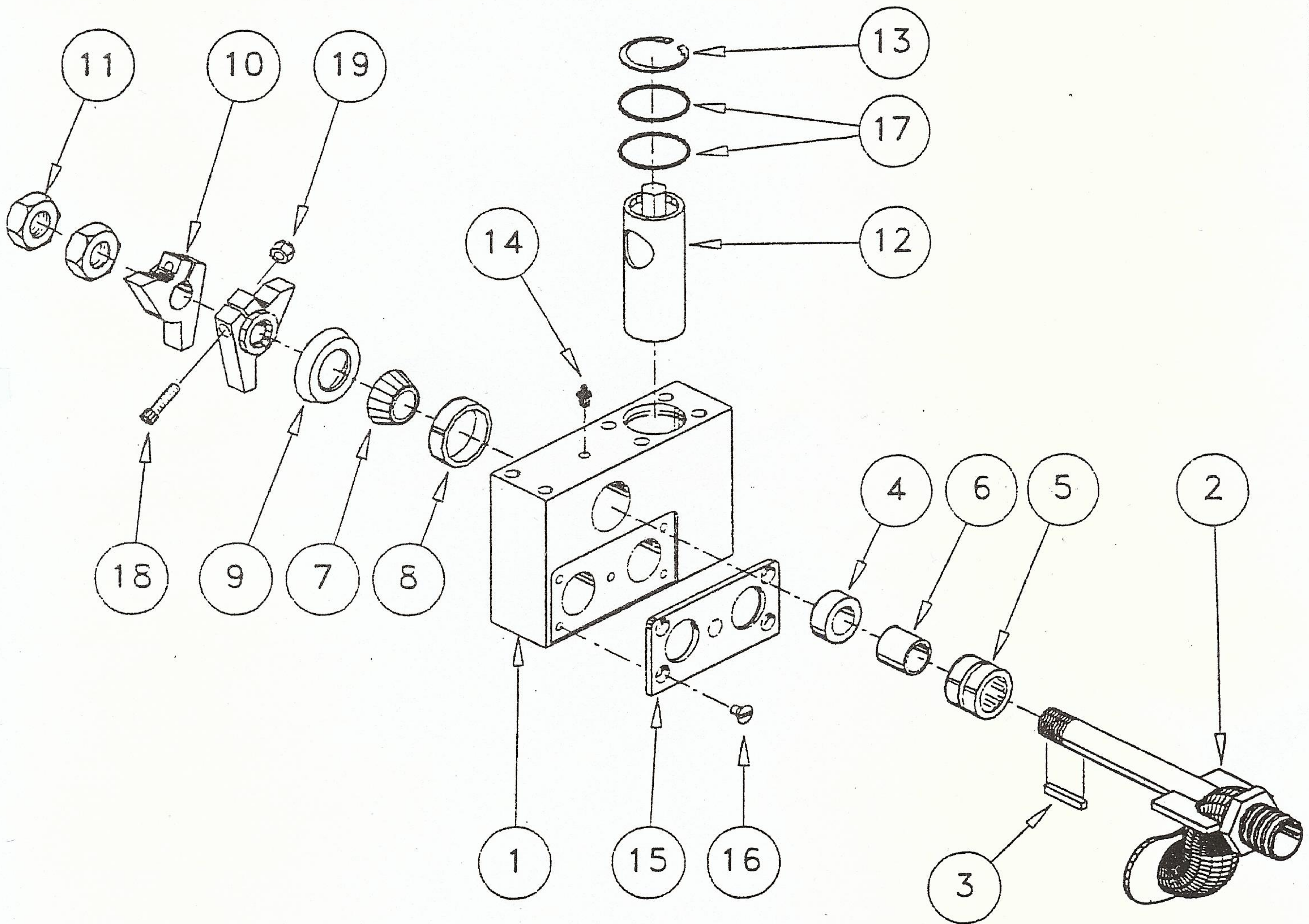
1321MV CASING HAMMER

ITEM NO	WB PART NO	QTY	PART DESCRIPTION	SERIAL NO EFFECTIVITY
INTERNAL AIR SYSTEM				
1	760-109-005	REF	RAM	101
2	318-000-005	2	AIR CYLINDER ASSEMBLY	101
3	362-003-000	1	MECHANICAL AIR VALVE ASSEMBLY	101
4	553-018-001	1	HOSE 1-1/2 X 4	101
5	553-093-036	2	HOSE CLAMP	101
6	554-005-005	3	HOSE END - STRAIGHT	101
7	565-009-029	2	PIPE NIPPLE 1-1/2 CLOSE SCH80	101
8	99108	2	MANIFOLD - WELDMENT	101
9	554-005-012	4	HOSE END 90°	101
10	553-018-001	2	HOSE 1-1/2 X 8-3/4	101
11	553-093-040	10	HOSE CLAMP	101
12	553-018-001	2	HOSE 1-1/2 X 9-3/8	101
13	565-028-000	1	45° STREET ELBOW	101
14	760-000-006	1	CHECK VALVE - MODIFIED	101
15	553-018-001	1	HOSE 1-1/2 X 6-1/2	101





# WELDCO-BEALES



REV	DATE	PRODUCT	MODEL	DESCRIPTION	WB PART NO	REF
	11-95	CASING HAMMER	MV	MECHANICAL VALVE ASSEMBLY	362-003-000	A



## 412MV-615MV-915MV-1262MV-1321MV

ITEM NO	WB PART NO	QTY	PART DESCRIPTION	SERIAL NO EFFECTIVITY
	362-003-000		MECHANICAL VALVE ASSY	
1	760-000-002	1	VALVE BODY	101
2	362-005-000	1	ROCKER ARM-WELDMENT	101
3	700-000-005	1	KEY	101
4	700-010-051	1	SPACER	101
5	511-045-003	1	ROLLER BEARING	101
6	519-075-021	1	INNER RACE	101
7	511-070-030	1	CONE	101
8	511-070-029	1	CUP	101
9	719-903-000	1	U-CUP SEAL	101
10	760-110-000	2	ROCKER	101
11	545-030-003	2	HEX JAM NUT-1" NF	101
12	362-003-001	1	SPOOL-WELDMENT	101
13	545-038-200	1	SNAP RING	101
14	563-041-002	1	GREASE FITTING-1/8 NPT	101
15	760-000-001	1	WEAR PLATE	101
16	545-067-000	5	FLAT HD SCR-5/16 NC x 1/2	101
17	535-030-136	2	O-RING	101
18	545-062-004	2	SOC HD SCR-5/16 NC X 1-1/2	101
19	545-023-008	2	LOCK NUT-5/16 NC	101



**WB**

**WELDCO-BEALES**





915MV-1262MV-1321MV

ITEM NO	WB PART NO	QTY	PART DESCRIPTION	SERIAL NO EFFECTIVITY
TOP SEAL ASSEMBLY-4.5 DRILL				
1	362-016-000	1	CAN WELDMENT	44003
2	558-023-028	2	** SEAL	44003
3	760-107-015	1	COVER PLATE	44003
4	545-060-029	6	HEX HEAD SCREW 3/8 NF X 1-1/2	44003
5	545-072-003	6	FLAT WASHER 3/8 Ø	44003
6	545-030-013	6	JAM NUT 3/8 NF	44003
7	545-060-094	4	HEX HEAD SCREW 3/4 NF X 5-1/2	44003
8	545-073-008	4	LOCK WASHER 3/4 Ø	44003
9	545-072-008	4	FLAT WASHER 3/4 Ø	44003
10	700-010-035	4	SPACER	44003

\*\* RECOMMENDED SPARES